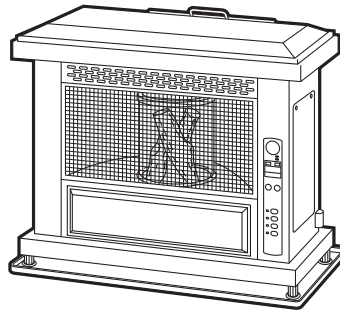
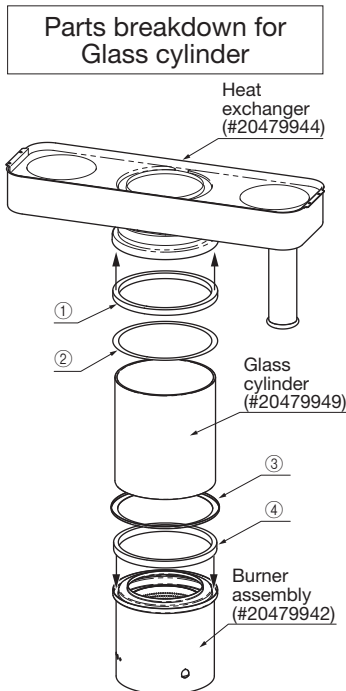


How to replace the new Glass cylinder gasket for Laser 60AT

NOTE: The Glass cylinder gasket set should be used only for Laser 60AT.

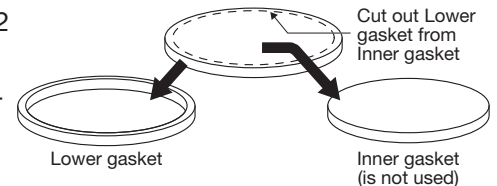


Laser 60AT



No.	Parts name	Size	Q'ty
Upper gasket set (#20479985)			
①	Upper gasket		1
②	Upper gasket holder		1
Lower gasket set (#20479984)			
③	Lower gasket holder		1
④	Lower gasket		1

NOTE: Lower gasket is pre-cut and consist of 2 parts (Lower gasket and Inner gasket). The Lower gasket is needed for replacement, however, the Inner gasket is not used and can disposed of.



How to install the new Glass cylinder gaskets into Burner assembly and Heat exchanger

- 1** Remove old gaskets.
- 2** Place the Lower gasket (④) into the Burner assembly first.
- 3** Carefully press Lower gasket holder (③) onto the Lower gasket (④) and install Glass cylinder onto Burner assembly. It is not necessary to press holder down all the way.
- 4** With Heat exchanger upside down, install Upper gasket (1) into gasket groove of Heat exchanger.
- 5** Slightly press Upper gasket holder (②) onto Upper gasket (①) and install Heat exchanger onto Glass cylinder. The Upper gasket holder (②) securely holds in place the Upper gasket (①).

NOTE: Use caution when installing the Upper gasket holder (②) and Lower gasket holder (③) as they are sensitive to pressure, it is not necessary to press the holders all the way in, this will happen when the Heat exchanger is installed.

NOTE: It is necessary to replace all these parts at the same. The Lower gasket (④), Upper gasket (①), Lower gasket holder (③) and Upper gasket holder (②) can only be used once, because the gaskets are compressed when Glass cylinder is seated.

NOTE: There may occurred the burning smell of the brand new gaskets for approx. 10 - 15 minutes after pre-heating. (Individual results may vary.)

TOYOTOMI U.S.A., INC

604 Federal Road, Brookfield, CT 06804

www.toyotomiusa.com